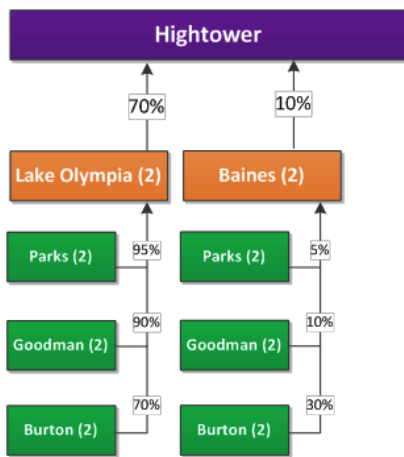
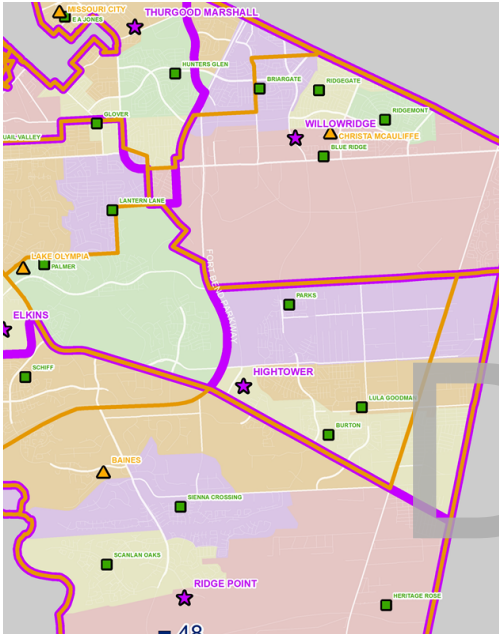
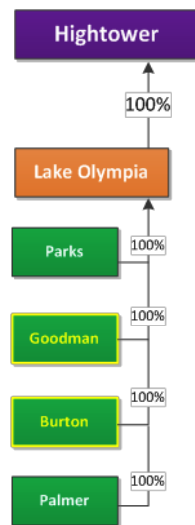
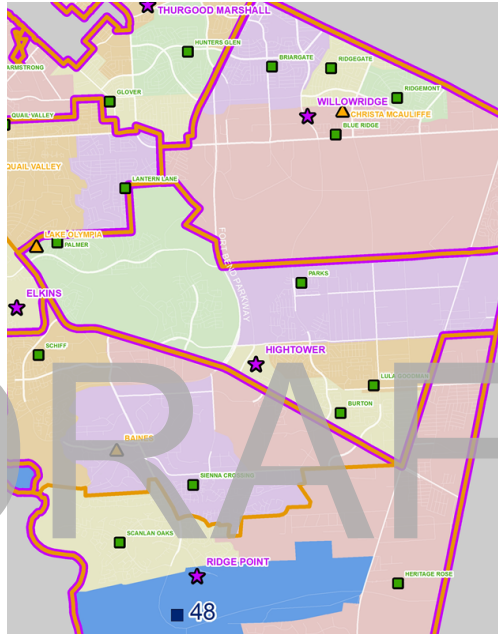


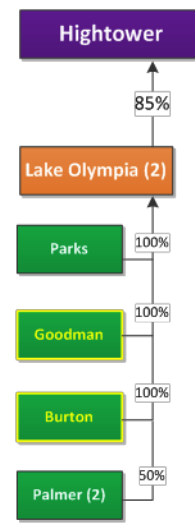
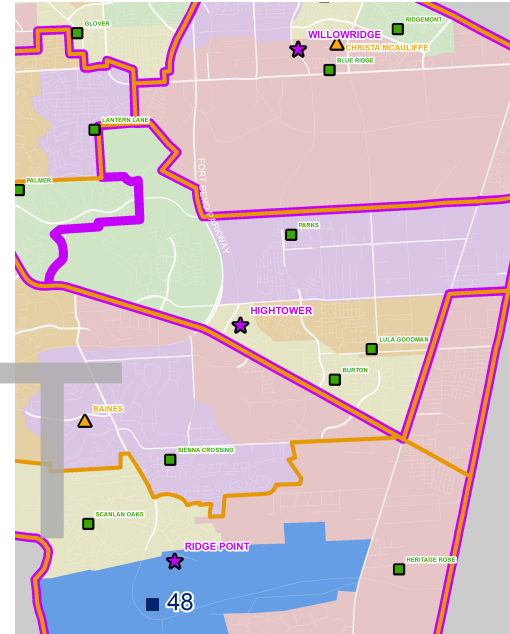
## Current Configuration



## Scenario A



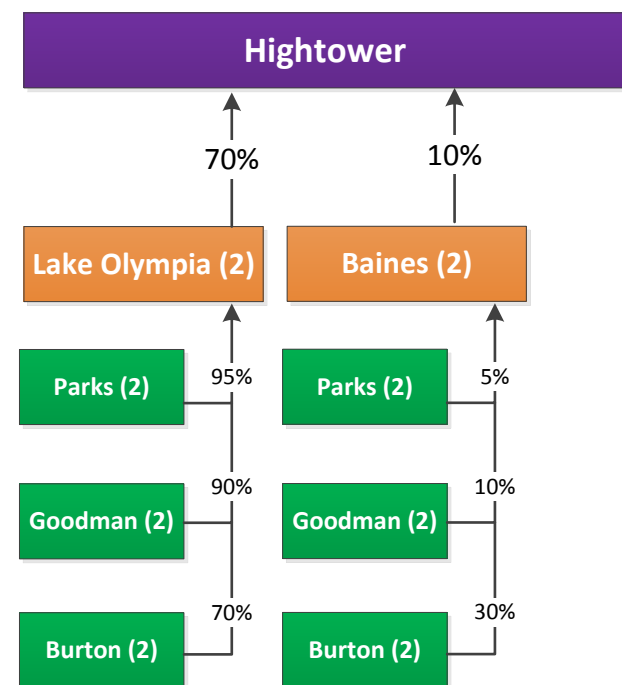
## Scenario B



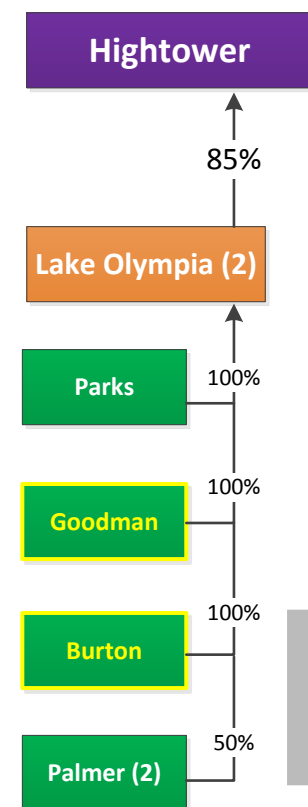
Fort Bend ISD: District-wide Feeder Pattern and Boundary Planning Process: Feeder Pattern Detail

Scenario B

Current Feeder Pattern



Proposed Feeder Pattern



DRAFT



Note: ( ) numbers in parentheses indicate the number of schools each school will split into at the next grade level. The percentages next to each facility indicate the percentage of that school which feeds to the next grade level in that feeder pattern. An elementary will show as a split to middle school if it feeds into one middle school and then splits at the high school level.

Overview

Hightower High School currently serves students from portions of two middle schools and three elementary schools. All of the elementary schools split between Lake Olympia and Baines Middle Schools, with all ending up at Hightower High School. Several of the feeding elementary schools are projected to be over the utilization threshold of 120% within the next five years. Due to observed and projected growth an addition (Palmer) is on the current capital plan.

A significant amount of growth is projected to occur within the feeder over the next ten years. Please note that another elementary school, additions, or boundary changes may be required in the near future.

The proposed feeder pattern and associated boundary changes address the projected growth while moving in the direction of more aligned feeders. The number of middle schools served decreases to one, and elementary increases to four, three of which are exclusive (meaning that each elementary feeds into one middle school, and then into Hightower). Palmer may split between Elkins and Hightower feeding through Lake Olympia.

Implementation Strategy

Boundary Changes

- **Goodman:** Area east of TX-521 from Goodman to Heritage Rose, scope and timeline to be determined.
- **Burton:** Area east of TX-521 from Burton to Heritage Rose, scope and timeline to be determined.

Feeder Changes

- Goodman, Parks and Burton may no longer partially feed into Baines. Implementation may begin 2015-16.
- Palmer may split between the Hightower and Elkins Feeder Pattern. Implementation may begin 2015-16.

Facility	Capital Action	Current Boundaries and Feeders										Proposed Boundaries and Feeders										Facility				
		Capacity				Projected Enrollment				Projected Utilization				Projected Enrollment				Projected Utilization								
		2014-15	2015-16	2016-17	2017-18	2014-15	2015-16	2016-17	2017-18	2018-19	2014-15	2015-16	2016-17	2017-18	2018-19	2014-15	2015-16	2016-17	2017-18	2018-19	2014-15		2015-16	2016-17	2017-18	2018-19
Burton		629	629	629	629	879	899	905	915	937	140%	143%	144%	145%	149%	558	567	570	575	579	89%	90%	91%	91%	92%	Burton
Goodman		605	605	605	605	722	740	733	726	716	119%	122%	121%	120%	118%	643	670	664	658	649	106%	111%	110%	109%	107%	Goodman
Palmer	Addition opens Fall 2017 (200 seats)	660	660	660	860	See Current Elkins Feeder Pattern										604	618	670	749	867	92%	94%	102%	87%	101%	Palmer
Parks		701	701	701	701	719	819	909	997	1,097	103%	117%	130%	142%	156%	719	819	909	997	1,097	103%	117%	130%	142%	156%	Parks
Baines		1,554	1,554	1,554	1,554	1,629	1,718	1,804	1,804	1,858	105%	111%	116%	116%	120%	See Ridge Point Feeder Pattern										Baines
Lake Olympia		1,411	1,411	1,411	1,411	1,340	1,339	1,391	1,391	1,421	95%	95%	99%	99%	101%	1,360	1,372	1,440	1,440	1,476	96%	97%	102%	102%	105%	Lake Olympia
Hightower		2,551	2,551	2,551	2,551	1,693	1,720	1,734	1,779	1,779	66%	67%	68%	70%	70%	1,757	1,785	1,806	1,890	1,890	69%	70%	71%	74%	74%	Hightower