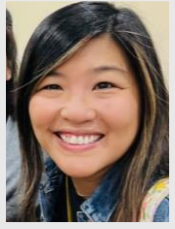




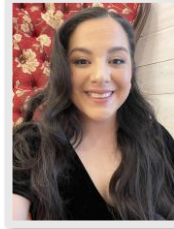
# Say Hello to the 2024-25 SWE PTA BOARD MEMBERS!



**President**  
Michelle Le  
[president@sweptatx.org](mailto:president@sweptatx.org)



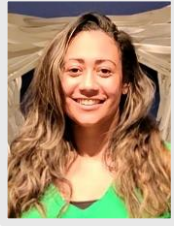
**Vice President - Membership**  
Sarah McClellan  
[membership@sweptatx.org](mailto:membership@sweptatx.org)



**Vice President - Fundraising**  
Dolores Maldonado  
[fundraising@sweptatx.org](mailto:fundraising@sweptatx.org)



**Secretary**  
Sophia Johnykutty  
[secretary@sweptatx.org](mailto:secretary@sweptatx.org)



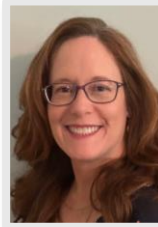
**Treasurer**  
Calene Webster  
[treasurer@sweptatx.org](mailto:treasurer@sweptatx.org)



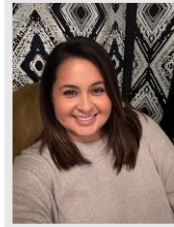
**Parliamentarian**  
Christine Lee  
[parliamentarian@sweptatx.org](mailto:parliamentarian@sweptatx.org)



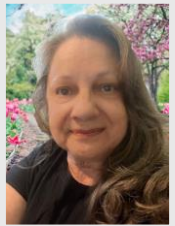
**Communications**  
Rachael Gleason  
[communication@sweptatx.org](mailto:communication@sweptatx.org)



**Family Engagement**  
Brenda Hill  
[familyengagement@sweptatx.org](mailto:familyengagement@sweptatx.org)



**Hospitality**  
Jessica Harris  
[hospitality@sweptatx.org](mailto:hospitality@sweptatx.org)



**Programs**  
Ann Velasco  
[programs@sweptatx.org](mailto:programs@sweptatx.org)



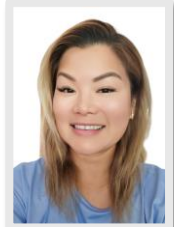
**Reflections**  
Grace Chen  
[reflections@sweptatx.org](mailto:reflections@sweptatx.org)



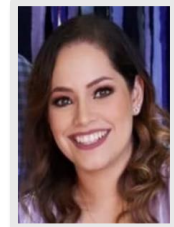
**Spirit Night**  
Mariyah Dhedhi  
[spiritnight@sweptatx.org](mailto:spiritnight@sweptatx.org)



**Spirit Wear**  
Angela Himoud  
[spiritwear@sweptatx.org](mailto:spiritwear@sweptatx.org)



**Volunteers (VIPS)**  
Annie Chen  
[vips@sweptatx.org](mailto:vips@sweptatx.org)



**Yearbook**  
Maria Elena Cruz  
[yearbook@sweptatx.org](mailto:yearbook@sweptatx.org)