

DRAMA

7th grade Reading



Drama

- Drama is a kind of story that is written to be performed by actors in front of an audience on stage or in front of a camera

Types of Drama:

1. stage plays
2. radio plays
3. movies
4. television programs



Purpose

- ❖ The purpose of drama is to tell a compelling story.
- ❖ The plot and characters are developed through dialogue and action.
- ❖ Through words and action, drama brings ideas, concepts and emotions to life.



Elements of Drama



- **Plot-** series of related events
- **Conflict-** a struggle
- **Setting-** time and place
- **Character-** person or animal in literary work
- **Dialogue-** the words the character speaks
- **Playwright-** the author of a play
- **Acts-** the units of action, a group of scenes
- **Scenes-** parts of the act, section



Actors

- People who perform in a play.



Script

- Lines written out for characters to speak.



Scenery



- Items on stage to help create the setting

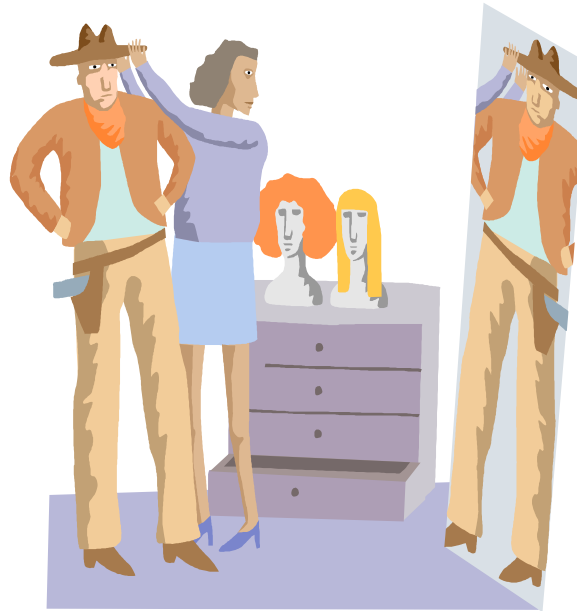
Props

- The physical objects the characters use.



Costumes

- Clothes the characters wear.



Sound effects

- The planned noise that accompanies the play.

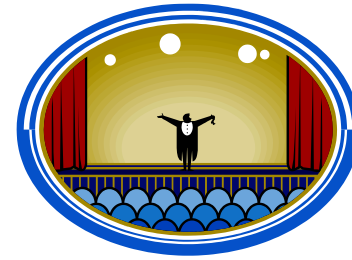


Elements Unique to Drama

1. Stage Directions
2. Scenes
3. Monologue/Soliloquy
4. Aside



Stage Directions



* These are written instructions about how actors should move and behave. They also explain how the stage should look and where props are located.

Scenes

* A section in which all the events occur in one place at a time.



Monologue



- A speech by a character alone on stage.
- Soliloquy: completely alone
- Words reveal what the character is thinking or feeling.

Aside

- A character makes a brief remark either to the audience or another character only.

Plot

- In a drama, a strong plot is needed because the audience watches the action develop.

Dialogue

- Different ways a character speaks.
- **Dialogue-** conversation between two or more characters.



Summary

Summary

A **drama** is a story performed for an audience by actors. Drama brings ideas and concepts to life through the words and actions of actors.

The elements of drama are **plot, conflict, setting, character, scenes, stage directions, dialogue, monologue, soliloquy, and asides**. In a dialogue, two or more characters speak. In a monologue, a single character speaks.

Stage directions are a playwright's written instructions about how a play should look when it is performed. Stage directions explain how actors should move and behave. They also explain how the stage should look and where props (items used in the play) are located.



Rectangular Snip

