

FBISD

Long-Range Boundary Planning and Enrollment Management



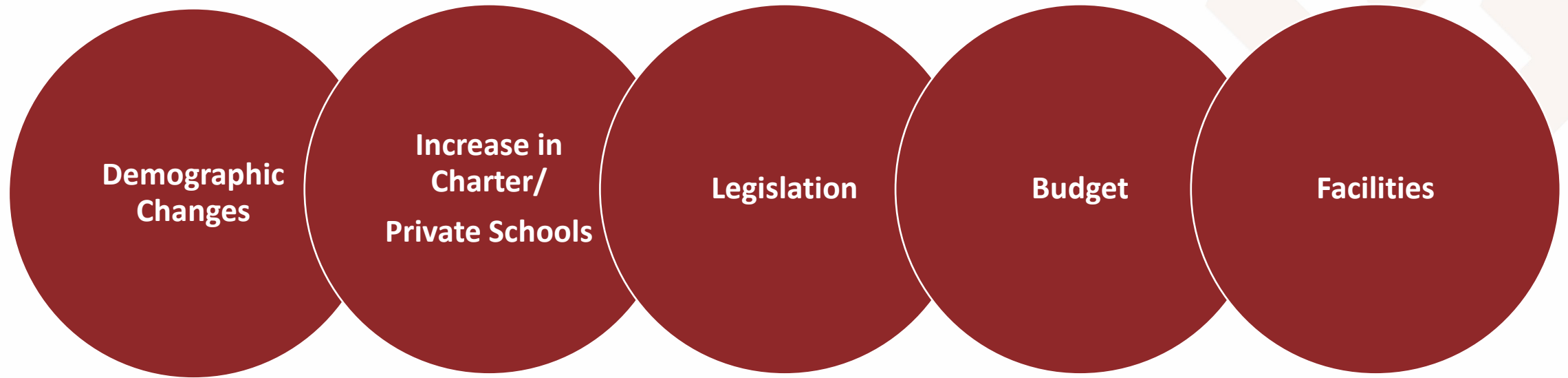
Lead
THE PAC

Inflection Point

As the District trends toward enrollment stabilization, we must strategize to create balanced and efficient campus utilization through **long-range boundary planning** to ensure that all students have access to quality education, resources, and programs.



Influencing Variables

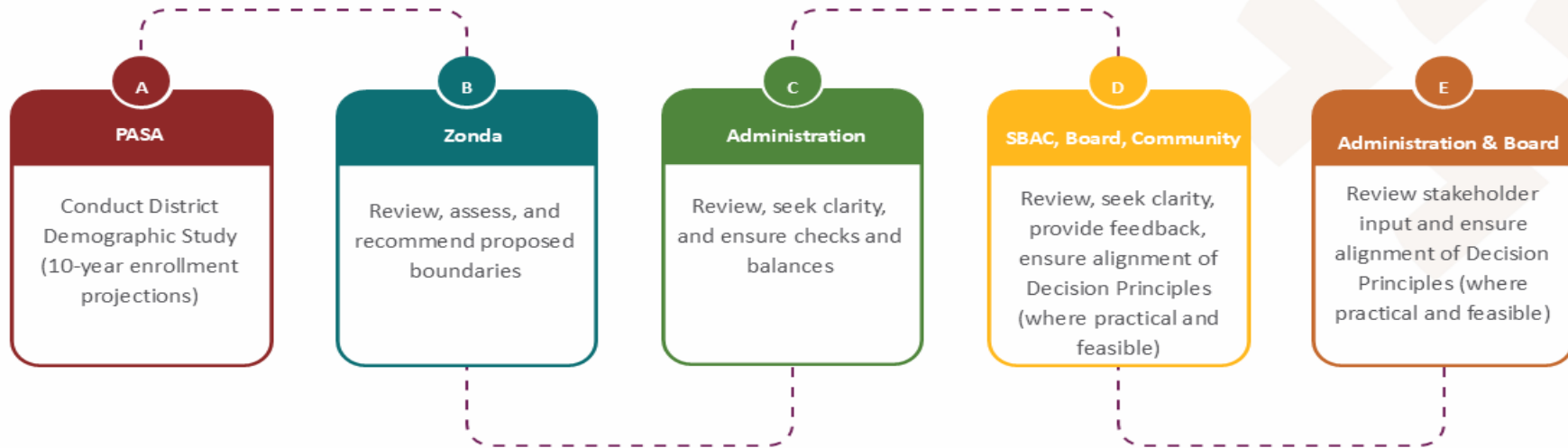


*Each of these variables play a vital role in the long-range boundary planning process and can potentially impact the timeline.

Planning Blueprint

- All high school feeder patterns will be reviewed for optimal efficiency.
- Any campus within a feeder pattern could be impacted by a boundary change.
- Feeder pattern adjustments could occur.
- Planning units may be split only when needed to ensure efficiency in campus utilization.

Stakeholder engagement is vital to the process



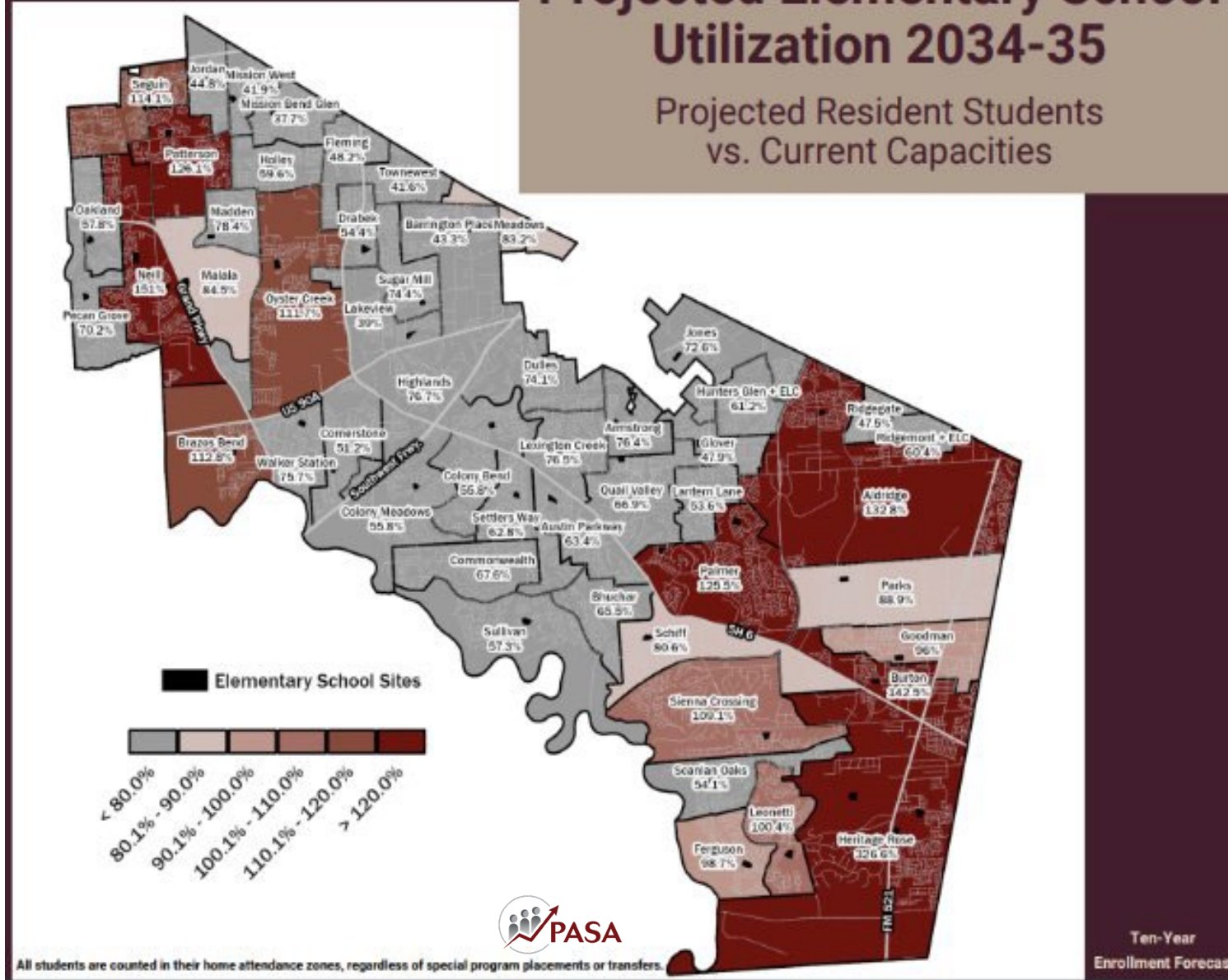
District Feeder Patterns



NOTE: The percentages reflected on this chart are subject to change due to enrollment changes.

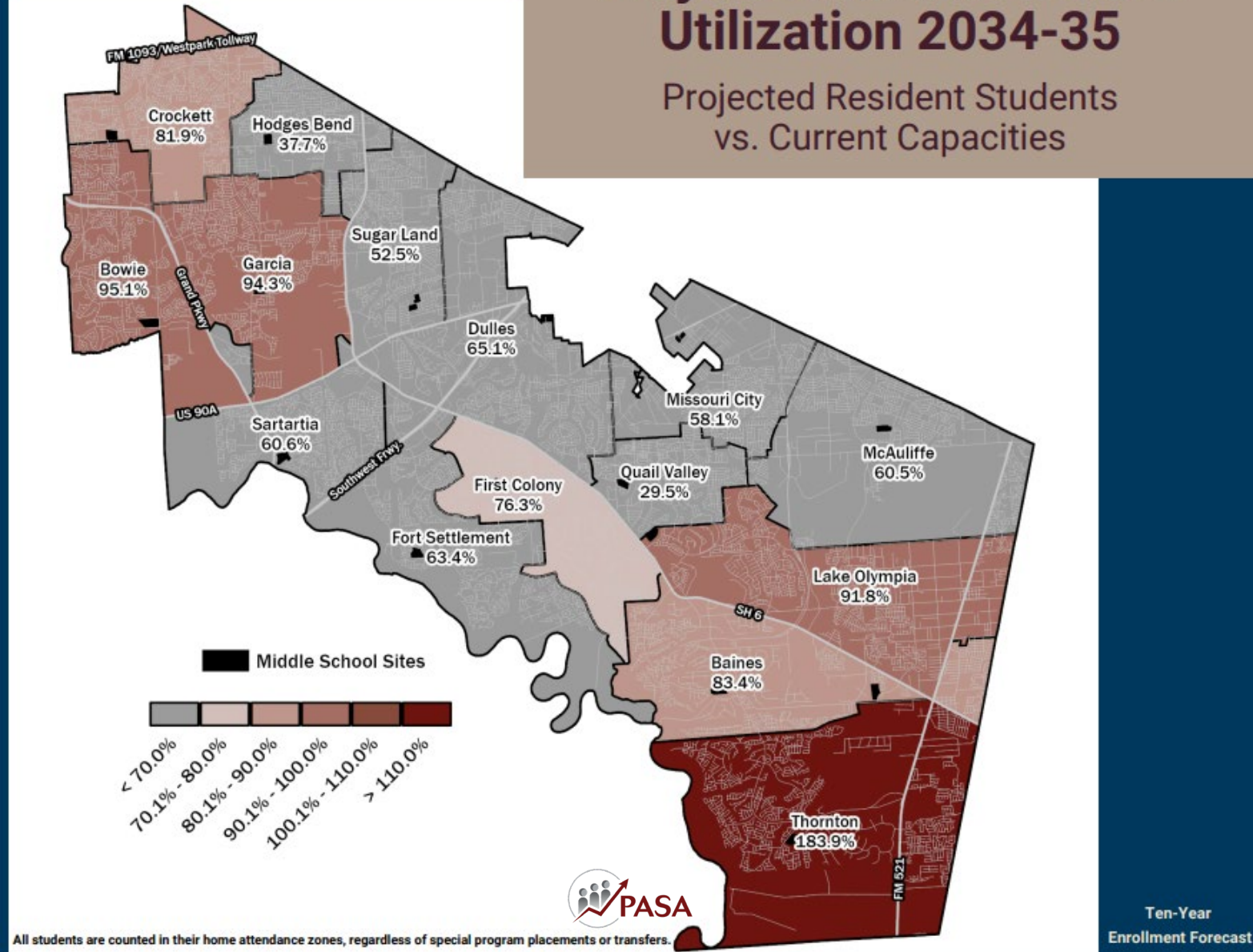
Projected Elementary School Utilization 2034-35

Projected Resident Students
vs. Current Capacities



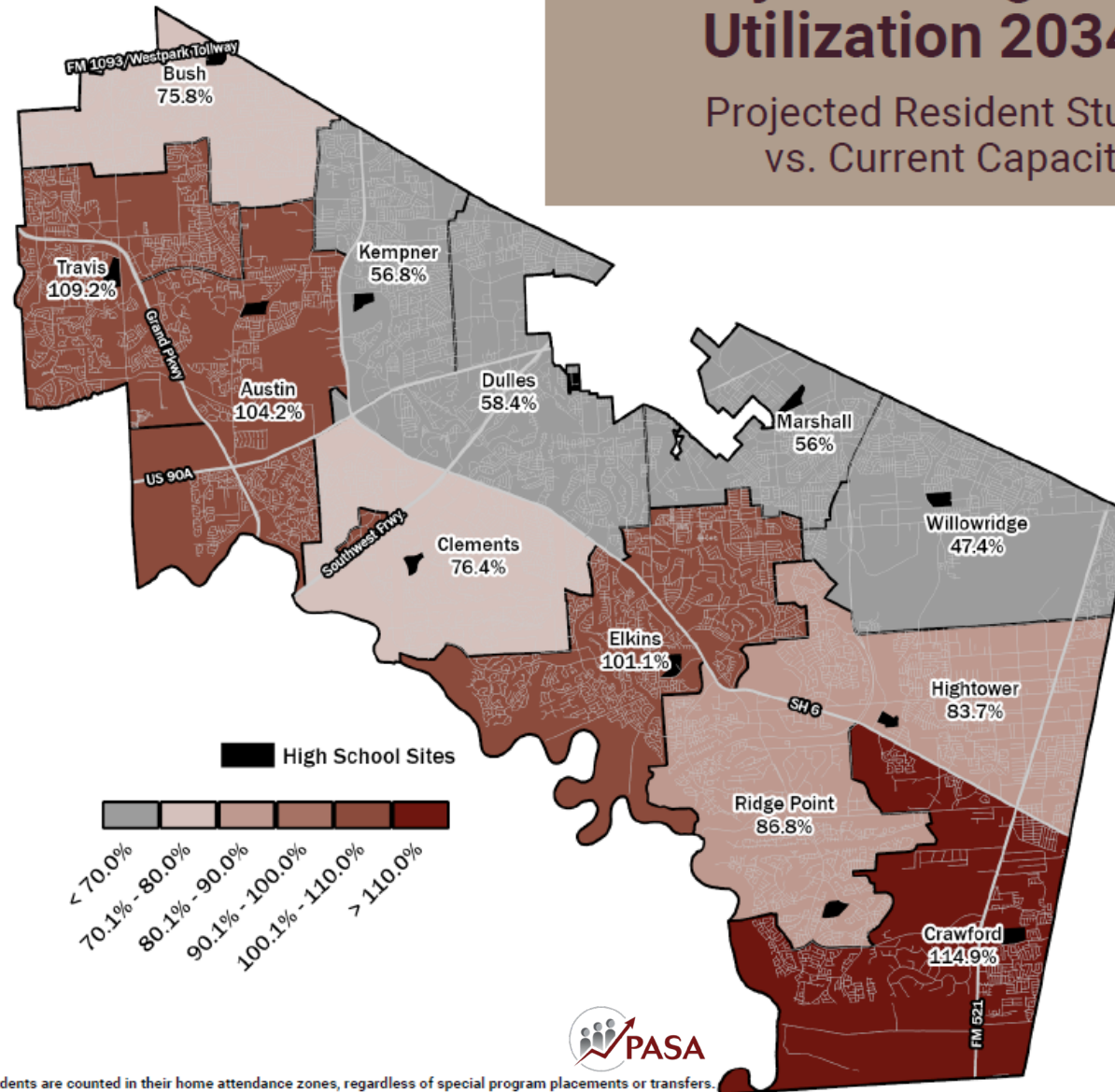
Projected Middle School Utilization 2034-35

Projected Resident Students
vs. Current Capacities



Projected High School Utilization 2034-35

Projected Resident Students
vs. Current Capacities



Ten-Year
Enrollment Forecast



Planning Strategy

Spring 2025:

- Launch Communication Plan
- Engage SBAC in Year 1 scope of work

Year 1: 2025-26:

- Prioritize highly utilized campuses
- Plan for opening of Middle School 16
- Plan for elementary school closures

Year 2: 2026-27:

- Continue addressing campus utilization
- Continue planning for elementary and possible secondary school closures

Year 3: 2027-28:

- Continue addressing campus utilization
- Plan for growth areas

Proposed Planning Targets by Feeder Pattern

**Year 1:
(2025-26)**

- Austin Feeder Pattern
- Bush Feeder Pattern
- Crawford Feeder Pattern
- Elkins Feeder Pattern
- Kempner Feeder Pattern
- Hightower Feeder Pattern
- Ridge Point Feeder Pattern
- Travis Feeder Pattern

**Year 2:
(2026-27)**

- Bush Feeder Pattern
- Clements Feeder Pattern
- Marshall Feeder Pattern
- Willowridge Feeder Pattern

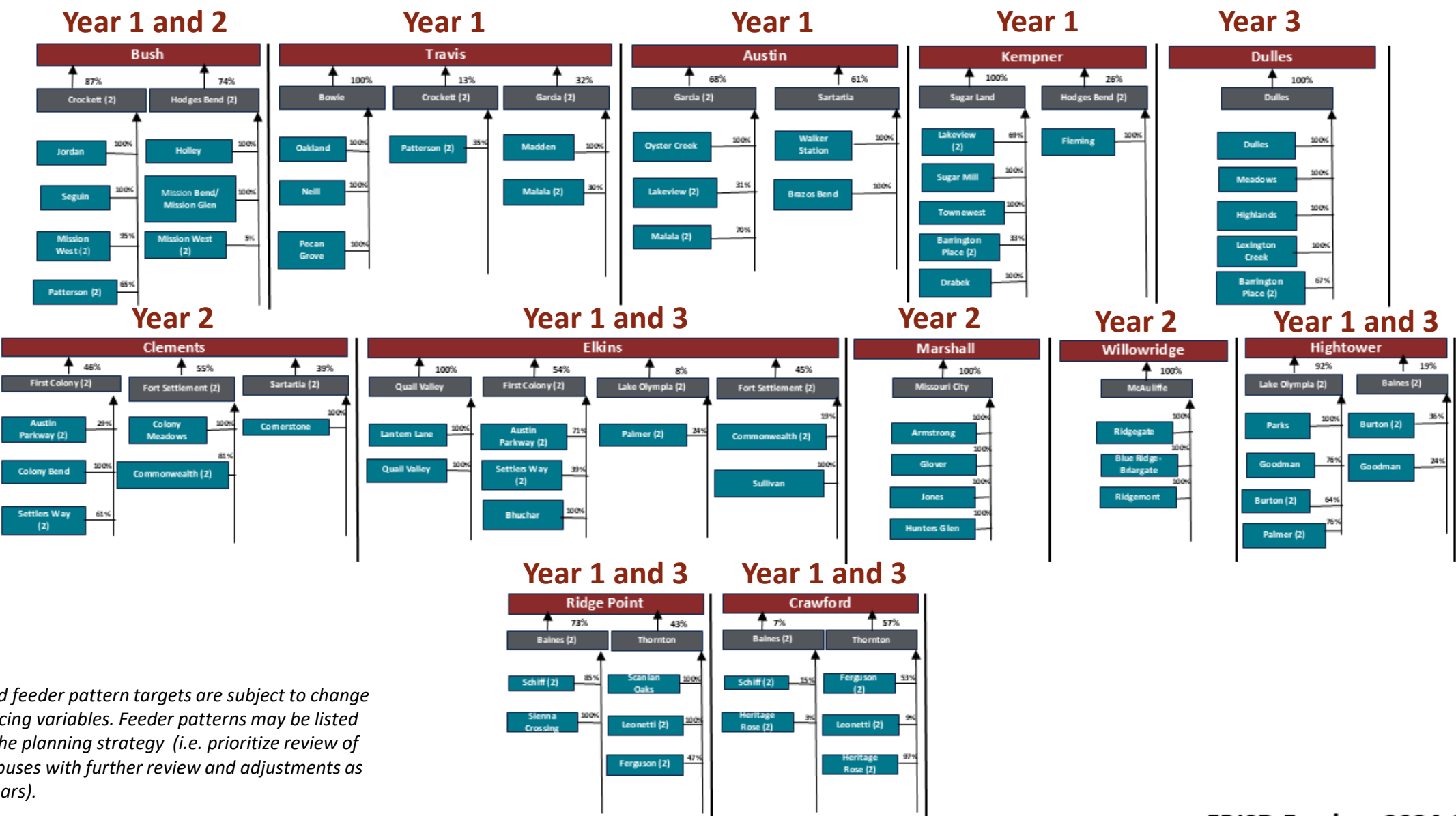
**Year 3:
(2027-28)**

- Crawford Feeder Pattern
- Dulles Feeder Pattern
- Elkins Feeder Pattern
- Hightower Feeder Pattern
- Ridge Point Feeder Pattern

**Boundary plan and feeder pattern targets are subject to change based upon influencing variables. Feeder patterns may be listed twice based upon the planning strategy (i.e. prioritize review of highly utilized campuses with further review and adjustments as needed in future years).*



District Feeder Patterns



**Boundary plan and feeder pattern targets are subject to change based upon influencing variables. Feeder patterns may be listed twice based upon the planning strategy (i.e. prioritize review of highly utilized campuses with further review and adjustments as needed in future years).*

2025-26 Year 1: Boundary Planning Process

