



2021 Update to the 2018 Facilities Master Plan

May 10, 2021

2021 Facilities Master Plan Update

- Purpose of tonight's presentation:
 - Provide the Board with a May 2021 update to the original 2018 Facilities Master Plan
 - Updates included for each of the 11 recommendations
 - SBOC proposed scope of work

Recommendation 1: *Expand capacity at Malala ES, Neill ES, and Madden ES*

- Malala ES (ES 51)
 - Completed December 2019 at the full 1,000 capacity
- Neill ES (12 classrooms)
 - Construction started in August 2019
 - Completed: August 2020
- Madden ES (10 classrooms)
 - Construction started June 2020
 - Targeted occupancy Fall 2021

Recommendation 2: *Construct a new elementary school to relieve Commonwealth ES*

- ES 53 (Sonal Bhuchar ES) site procured in April 2020
 - Construction scheduled to begin April 2021
 - Scheduled to open with established attendance boundaries January 2023
 - Board approved school name of Sonal Bhuchar Elementary March 2021

- SBOC boundary review and input in fall 2021
 - Recommended attendance boundaries presented to the Board for consideration by January 2022
 - Cap and overflow from Commonwealth ES to Settlers Way ES will continue until opening of ES 53

Recommendation 3: *Rebalance enrollment between FCMS and FSMS*

- Board approved new attendance boundaries for First Colony MS and Fort Settlement MS in March 2019
- New boundaries implemented in 2019-20 school year

Recommendation 4: *Rebuild Meadows ES and Lakeview ES*

- Meadows ES Rebuild
 - Construction started in June 2019; 100% complete
 - Move-in completed April 2021
- Lakeview ES Rebuild
 - Construction started June 2020
 - LVE housed with BPE Fall 2021
 - Targeted occupancy January 2022

Recommendation 5: Construct a new elementary school to relieve Palmer ES and Parks ES

- ES 52 site procured in April 2020
 - ES 52 funded in 2018 Bond Program
 - Annual demographic update in March 2021 shows enrollment growth in area significantly below projections
 - ES 52 originally planned to open in 2022-23; revised projections show it will not be needed until 2024-25
 - Staff continues to recommend delaying construction to allow for opening in the 2024-25 school year, based on updated projections
 - Though utilization projections have increased for Palmer ES and Parks ES, they are not projected to exceed 100% of design capacity until 2023-2024

Recommendation 6: Utilize elementary campus capacity in Marshall and Willowridge feeder patterns to implement innovative instructional programs

- ELC at Ridgemont ES
 - Phased implementation began in 2018-19
 - Full implementation, serving all PreK through 1st grade students in the Willowridge feeder in 2022-23
 - Attendance boundary recommendations presented to the Board for consideration by January 2022
- EIA at Ridgemont
 - Relocated to Quail Valley ES in 2020-21 to provide additional capacity at ELC and a more central location

Recommendation 6: Utilize elementary campus capacity in Marshall and Willowridge feeder patterns to implement innovative instructional programs

- ELC at Hunters Glen ES
 - Postponed opening to 2021-22 due to COVID-19 pandemic
 - Scheduled to open in August of 2021 with an initial cohort of Early Childhood Special Education (ECSE) and Prekindergarten students
 - Enrollment for Kindergarten and 1st grade cohorts is planned for the 2022-23 and 2023-24 school years, respectively
 - The program will mirror the current instructional delivery model, staffing, and resources in place at the Ridgemont ELC.
 - Registration began April 1, and the PreK cohort is expected to serve approximately 127 PreK students.
 - Siblings of ECSE and Pre-kindergarten program ELC students will have the opportunity to attend Hunters Glen

Recommendation 7: Construct two new elementary schools in the Ridge Point Feeder Pattern

- Elementary 54 scheduled to open January 2023
 - Land procured August 2020
 - Reimbursement resolution to fund design and construction approved January 2021
 - Construction scheduled to begin June 2021 pending Board approval
 - Recommended attendance boundaries presented to the Board for consideration by January 2022

Recommendation 7: Construct two new elementary schools in the Ridge Point Feeder Pattern

- Elementary 55 currently scheduled to open in 2025-26
 - Staff working to identify a site
 - Recommend funding (land, design, construction) to be included in future bond
 - Proposed concept attendance boundaries presented to community and Board Fall 2021
- Demographic update shows significant growth in the area, and collective campus utilization will exceed 100% by 2021-22

Recommendation 8: Utilize Marshall and Willowridge elementary feeder capacity to implement innovative programming

- Recommendation 8 was not approved by the Board, but elements of the recommendation were incorporated into Recommendation 6

Recommendation 9: Develop flexible scheduling proof of concept for RPHS, Rebalance RPHS and HHS enrollment, budget for purchase of a HS site.

- HS 12 is scheduled to open in 2023-24 with a recommendation to open with three grade levels (grades 9-11)
 - SBOC will engage in related boundary work in fall 2021, with recommended boundaries presented for Board consideration by January 2022
- Overutilization at RPHS by is being managed by cap and overflow from RPHS to HHS implemented in 2020-21
- Staff recommends a review of HS boundaries district-wide as part of SBOC work in 2022-23

Recommendation 10: Use available capacity at MHS and WHS to implement innovative instructional programming.

- Staff worked with community-based planning committees resulting in the Willowridge P-TECH and Marshall ECHS programs opening in 2019-20
 - Started with 9th grade cohort of 100 students at each campus
 - Expanding into a year 3 cohort; initial cohort will matriculate to 11th grade in 2021-22
- Expanded Course Offerings
 - 2021-22: Mariachi at MHS and WHS and eSports at WHS
 - 2022-23: Modern Band at MHS

Recommendation 11: Construct a new middle school to serve HHS and RPHS

- MS 16 site procured in April 2020
 - MS 16 was funded in Bond 2018 for design only
 - District owns land for MS 16
 - NetZero Middle School
 - Staff will recommend including the construction budget in future bond
 - Occupancy expected fall 2024
 - Proposed concept attendance boundaries presented to community and Board Fall 2021

Additional New Construction

- Additional Agriculture Facility
 - Location: District owned property located off Highway 521
 - Schools to utilize facility: EHS, HHS, RPHS, and Crawford HS (HS 12)
 - Reimbursement resolution to fund design and construction approved January 2021
- New Transportation Facility
 - Location: District owned property located off Highway 521
 - Staff recommends funds for design and construction included in future bond

Long-Range Planning Summary

FBISD Long-Range Planning		Funding
Neill ES Classroom Additions	Completed August 2020	Bond 2018
Meadows ES Rebuild	Reopened April 2021	Bond 2018
Madden ES Classroom Additions	Completion Fall 2021	Bond 2018
Lakeview ES Rebuild	Reopens Jan 2022	Bond 2018
New Elementary in Parks Edge	ES 52; scheduled to open Fall 2024	Bond 2018
New Elementary in Riverstone	Sonal Bhuchar ES (ES 53); scheduled to open Jan 2023	Bond 2018
Four new Elementary Schools in southeast	ES 54; scheduled to open Jan 2023	Bond Resolution (Future Bond)*
	ES 55; scheduled to open Fall 2025	Future Bond*
	Future ES; proposed to open Fall 2025	Future Bond*
	Future ES; proposed to open Fall 2027	Future Bond*
New Elementary in northwest	Future ES	Future Bond*
New Middle School in southeast	MS 16; scheduled open fall 2024	Future Bond*
New High School in southeast	Almeta Crawford HS (HS 12); scheduled to open Fall 2023	Bond 2018

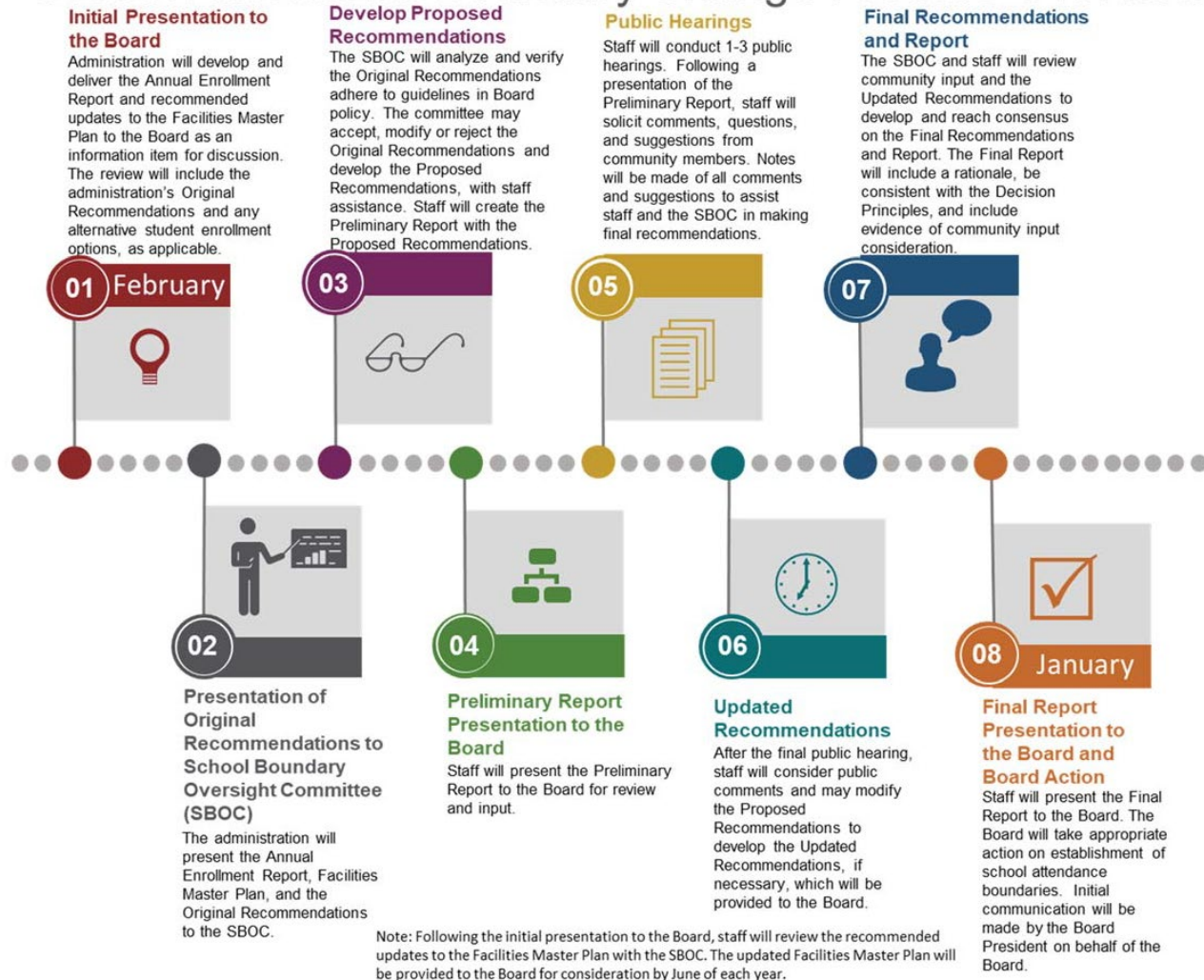
* Pending a future bond being called and approved

Long-Range Planning

- Early Literacy Center (ELC) Expansion
 - Full implementation for Willowridge ELC in Fall 2022
 - Implementation of Marshall ELC in Fall 2021
- Implementation of One-Way Dual Language Bilingual Program Fall 2021
- Innovative Programming (3rd-year cohort expansion)
 - WHS and HHS (P-TECH)
 - MHS (ECHS)

SBOC Attendance Boundary Process

School Attendance Boundary Change Process Overview



Proposed SBOC Scope of Work

2021-22	2022-23	2023-24
Willowridge ELC	Marshall ELC	ES 57
ES 53	ES 52	MS Boundaries
ES 54	ES 55	ES 58 (Concept)
HS 12	ES 56	
MS 16 (Concept)	MS 16	
ES 55 (Concept)	HS Boundaries	
ES 56 (Concept)	ES 57 (Concept)	
ES 57 (Concept)		

Questions