

DHS LADIES
PROM
DRESS
CODE

DHS Prom 2017 Dress Code

The following are photo examples with explanations as to what is considered “acceptable” and what is NOT.

These are just EXAMPLES. We ask that you use good judgment.

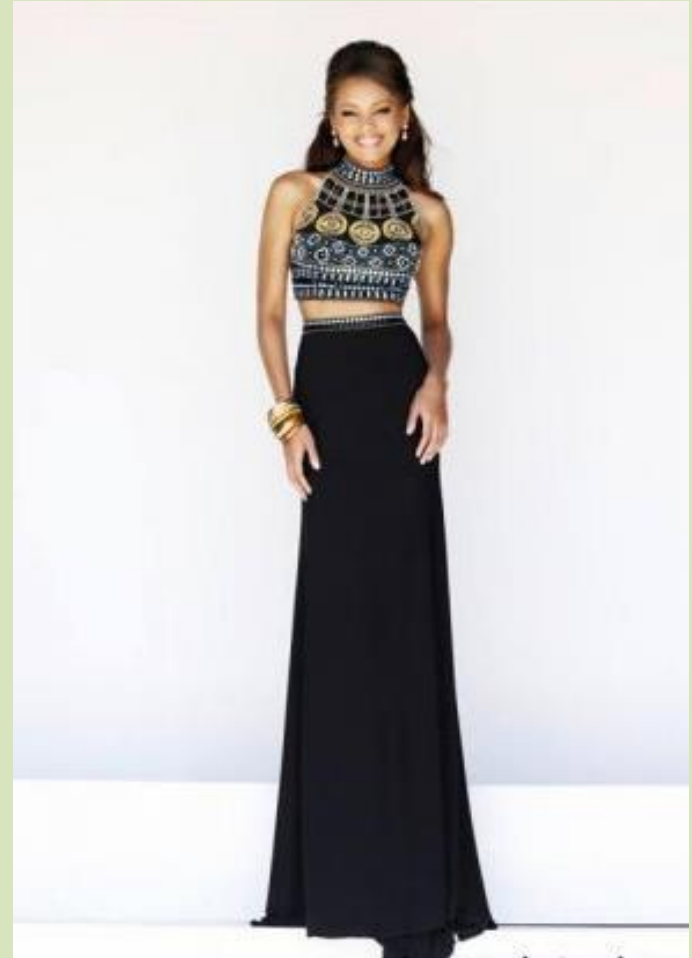
Here are a few “rules of thumb”:

- (1) Length: Dress must not be shorter than mid thigh, at any point of the dress. This includes the slit of the dress.
- (2) Midriff: Only a narrow portion of the midriff may show (2” maximum) and absolutely NO BELLY BUTTONS!
- (3) Necklines: The neckline of dress should not expose one’s cleavage.
- (4) Backline: Dresses with an open back may not dip beyond the lower backline.

The following dresses are appropriate:



Necklines are modest.
Midriff is 2 inches.
Length is appropriate.



- Neckline is modest.
- Midriff is 1-2 inches.
- Length is appropriate.
- Back is long enough.



Appropriate:

Necklines are modest. Midriff is <2 inches.

Length is appropriate.

Back does not dip below natural waistline.





The dresses pictured offer an example of the types of dresses we are accepting. Note that the blue two piece dress (on left) is modest in the amount of midriff that is showing.

The white dress has a side slit that ends at mid-thigh.



Dresses that are NOT appropriate



Navel should NOT be showing.

Length is too short.

Inappropriate:

Watch the height of the slit.
Must be mid-thigh or below,
NOT upper-thigh!



Not appropriate



Midriff is more than 2".

Necklines are TOO LOW or
expose too much.
Slit must not go above
mid thigh.



Not appropriate



Too much midriff is exposed.
Must be only 1-2"



The back of this dress falls
below the natural waist
line.





Although neckline and length are in accordance to the dress code, the midriff is too much and shows the navel.

↙
NOT APPROPRIATE!

NO!!! →



Not appropriate



- Blue dress: midriff is acceptable, but the skirt's slit is well above mid-thigh!
- Purple dress: too short in length, neckline is too low, and overall, too much skin is showing to be deemed appropriate.

The dresses pictured are just some examples of prom dress styles. If you choose a dress that is beyond the “appropriate” limits, you will be required to correct the violation before entering the venue. DHS administration reserves the right to deny entry if your outfit is deemed inappropriate for our high school sponsored prom.*

DHS expects all guests to act and dress in a manner that upholds our DHS school dress code policy.

Happy shopping and we looking forward to seeing everyone in their beautiful gowns!

*If you're unsure your dress is “up to code”, take a picture of yourself in the dress and share with your AP.