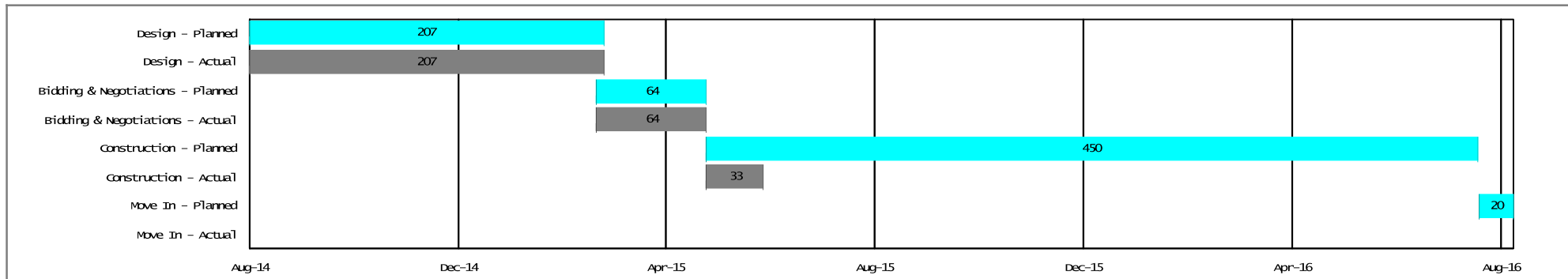


Project Summary  
**SULLIVAN ELEMENTARY (#47-RIVERSTONE)**



**SCHEDULE SUMMARY**



Description	BUDGET			COMMITMENTS			COST		
	A	B	C=A+B	D	E	G=D+E	H=C-G	I	J=I/C
	Original Budget	Budget Changes	Current Budget	Commitments	Additional Commitments To Complete	Projected Commitments	Projected Over/Under	Cost To Date	% Expended
Architect & Engineering/ Professional Services	\$5,710,596	\$0	\$5,710,596	\$2,377,994	\$3,332,602	\$5,710,596	\$0	\$1,592,862	27.89%
Construction	\$32,238,553	\$0	\$32,238,553	\$15,000	\$32,223,553	\$32,238,553	\$0	\$15,000	0.05%
Furniture, Fixtures & Equipment	\$2,579,084	\$0	\$2,579,084	\$0	\$2,579,084	\$2,579,084	\$0	\$0	0.00%
Site Development	\$241,789	\$0	\$241,789	\$0	\$241,789	\$241,789	\$0	\$0	0.00%
Other Construction Cost	\$65,477	\$0	\$65,477	\$0	\$65,477	\$65,477	\$0	\$0	0.00%
Project Contingency	\$2,149,238	\$0	\$2,149,238	\$0	\$2,149,238	\$2,149,238	\$0	\$0	0.00%
<b>Totals:</b>	<b>\$42,984,737</b>	<b>\$0</b>	<b>\$42,984,737</b>	<b>\$2,392,994</b>	<b>\$40,591,743</b>	<b>\$42,984,737</b>	<b>\$0</b>	<b>\$1,607,862</b>	<b>3.74%</b>

**SCOPE/COMMENTS**

**SCOPE:** Construction of a new elementary school in the Riverstone Community. The school was designed to achieve Leadership in Energy and Environmental Design (LEED) Certified Level.

**COMMENTS:**The site clearing permit has been issued, and the site tree removal has been completed. The urban forester has met with the contractor to review and provide guidance on the remaining trees in the tree protection areas. The general contractor is currently issuing contracts to the remaining subcontractors for the project. Major trade submittals have been submitted and are in the review process by the design team. The permit is to be issued to the contractor in June. Purchase Order to General Contractor for GMP amount forthcoming.

**PROJECT PHOTO**



**BUDGET /COST STATUS**

