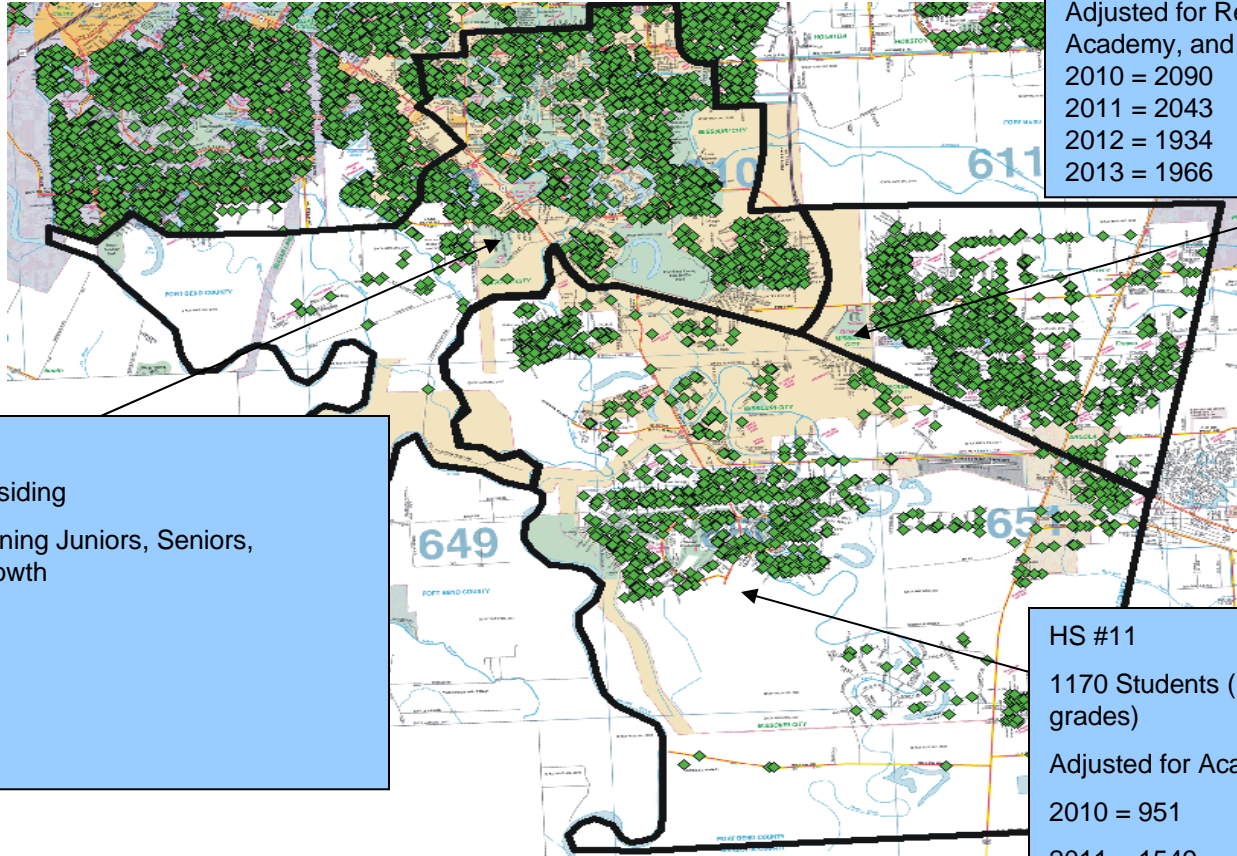


Option 1A

South of Hwy 6 to HS#11



Hightower
 1529 Students Residing
 Adjusted for Returning Juniors, Seniors,
 Academy, and Growth (2%)
 2010 = 2090
 2011 = 2043
 2012 = 1934
 2013 = 1966

Elkins
 1928 Students Residing
 Adjusted for Returning Juniors, Seniors,
 Academy, and Growth
 2010 = 2121
 2011 = 2211
 2012 = 2249
 2013 = 2439

HS #11
 1170 Students (Residing in 4 Grades, 653 in 2
 grades)
 Adjusted for Academy and Growth
 2010 = 951
 2011 = 1549
 2012 = 2147
 2013 = 2245

Feeder Pattern Change for South of Hwy 6:
 Current: JSE SCE SOE, BMS, EHS HHS
 Option 1: JSE SCE SOE ES45, BMS, HS11

HIGH SCHOOL #11, HIGHTOWER, AND ELKINS ATTENDANCE ZONING PROPOSAL

High School #11 – The new attendance zone consists of areas zoned from Elkins and Hightower High Schools. The HS#11 zone uses Highway 6 as its northern boundary, the Fort Bend County line as the eastern boundary, the Brazos river as the southwest boundary, and Steep Bank Creek continuing along the Missouri City limits, then following Flat Bank Creek to Highway 6 (point of beginning) as the northwest boundary.

Elkins High School – The current attendance zone is reduced by the area east of Steep Bank Creek continuing along the Missouri City limits, then following Flat Bank Creek and west of Sienna Parkway.

Hightower High School – The current attendance zone is reduced by the area south of Highway 6.

Rationale:

- Creates attendance zones with appropriate current student populations to provide for future growth in each zone.
- Allows each school to be as centrally located as possible to the student population it will serve.
- These zones provide an excellent feeder pattern from Elementary to High School.
- Adheres where possible to the zoning guiding principles.